

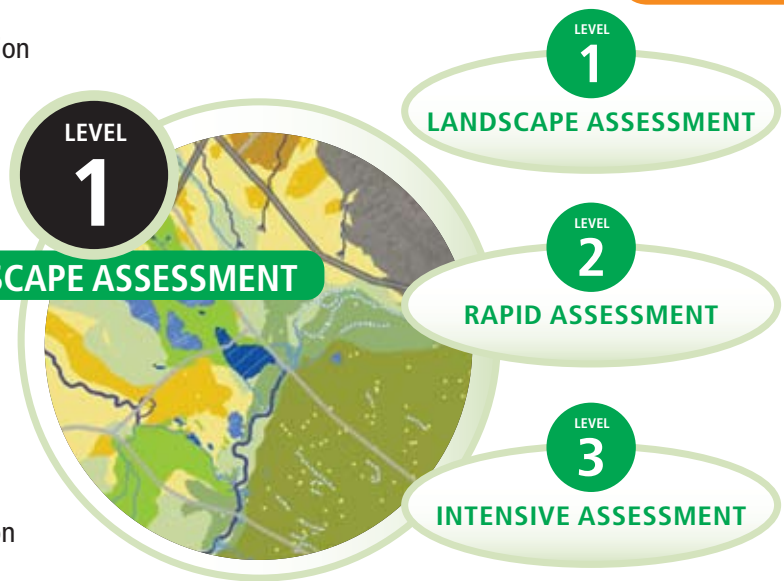
WETLAND TRACKER

What is Wetland Tracker?

Wetland Tracker is an interactive tool that displays information about modern and historical wetland habitat in California. Wetland Tracker catalogues planned, in progress, and completed wetland restoration, preservation, creation, and enhancement projects. The Bay Area Wetland Tracker is a product of the Bay Area's Wetland Regional Monitoring Program (WRMP) and disseminates WRMP assessment results.

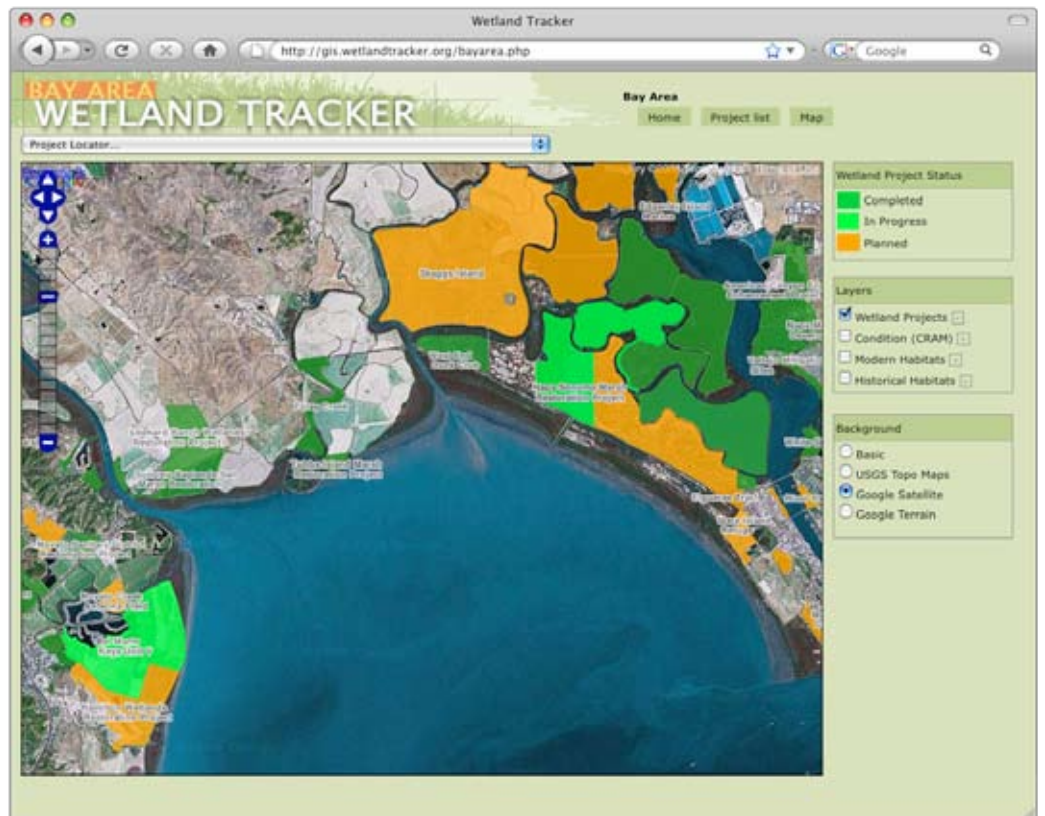
Purpose

The primary purpose of Wetland Tracker is to give wetland scientists, managers, and the interested public access to authoritative information about where California's wetlands are and how they are doing. Tracker enables interested parties to track the progress of restoration and mitigation projects. The San Francisco Bay Area Tracker covers wetlands and habitat in both the tidal portions of the Bay and higher up in the watershed. Tracker's base maps provide information on the extent of historical and modern habitat. This allows users to consider the impact of restoration and mitigation efforts in a watershed and regional context.



Who uses Wetland Tracker?

- State and Regional Water Resources Control Board staffs
- Local and regional agency staffs
- Environmental consultants
- Interested public
- NGOs



Tracker is based on open source software and continues to evolve. Advanced mapping and web tools are being used to create habitat acreage reports and enhance ease of use.

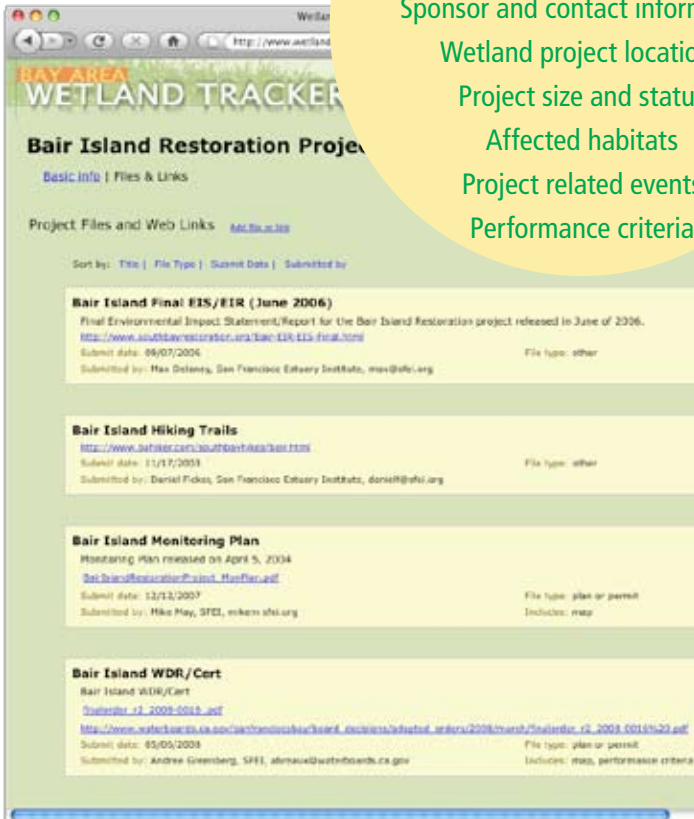


What project information is on Wetland Tracker?

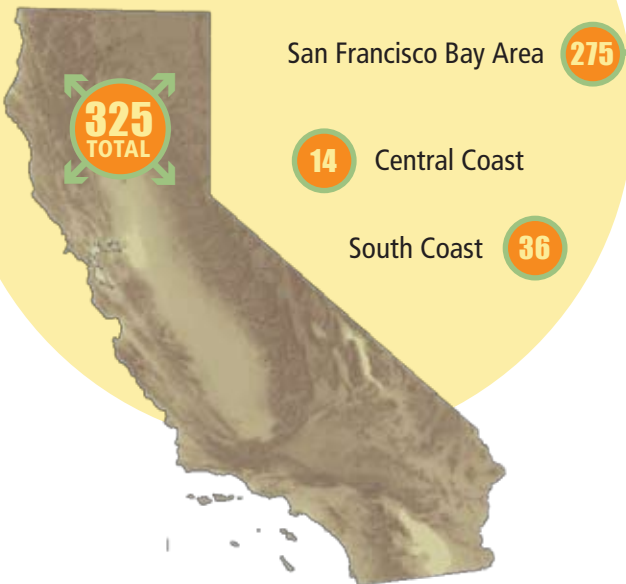
- Agency permit IDs
- Sponsor and contact information
- Wetland project locations
- Project size and status
- Affected habitats
- Project related events
- Performance criteria

What's in the project file library?

- Project plans and permits
- Reports and data
- Project management details
- Photos and videos
- Maps



As of December 2008,
California's Wetland Tracker
 has compiled about 325 restoration
 and mitigation projects across the state



The San Francisco Bay Area Wetland Tracker currently includes:

- Projects in tidal and formerly tidal regions downstream of the Delta
- Projects in the Napa River watershed
- Restoration and mitigation projects permitted by the Water Board since October 2006



SFEI is a 501(c)(3) non-profit organization conducting research and monitoring of San Francisco Bay. For questions, or to add a project to the Tracker, call (510) 746-7370 or staff@wetlandtracker.org